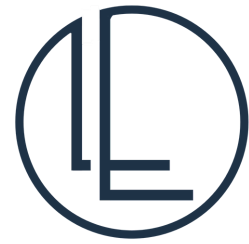


ELEVATION OPTIONS (PICK ONE)



LAMAR LAKES
OXFORD



BRIGGS

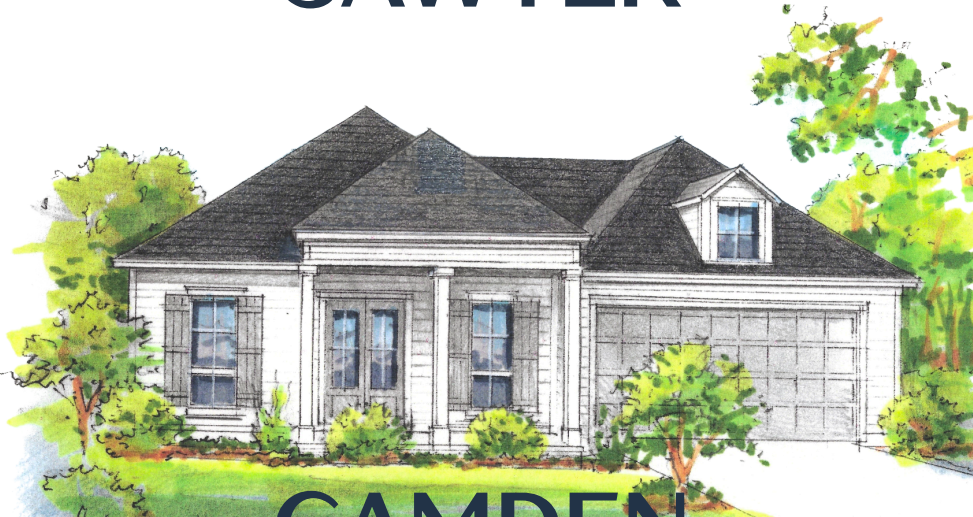
1563 SQ FT +/-
4 BEDROOMS
4 BATHS
\$448,581



SAWYER



CANNON | CLEARY
MCGRAW

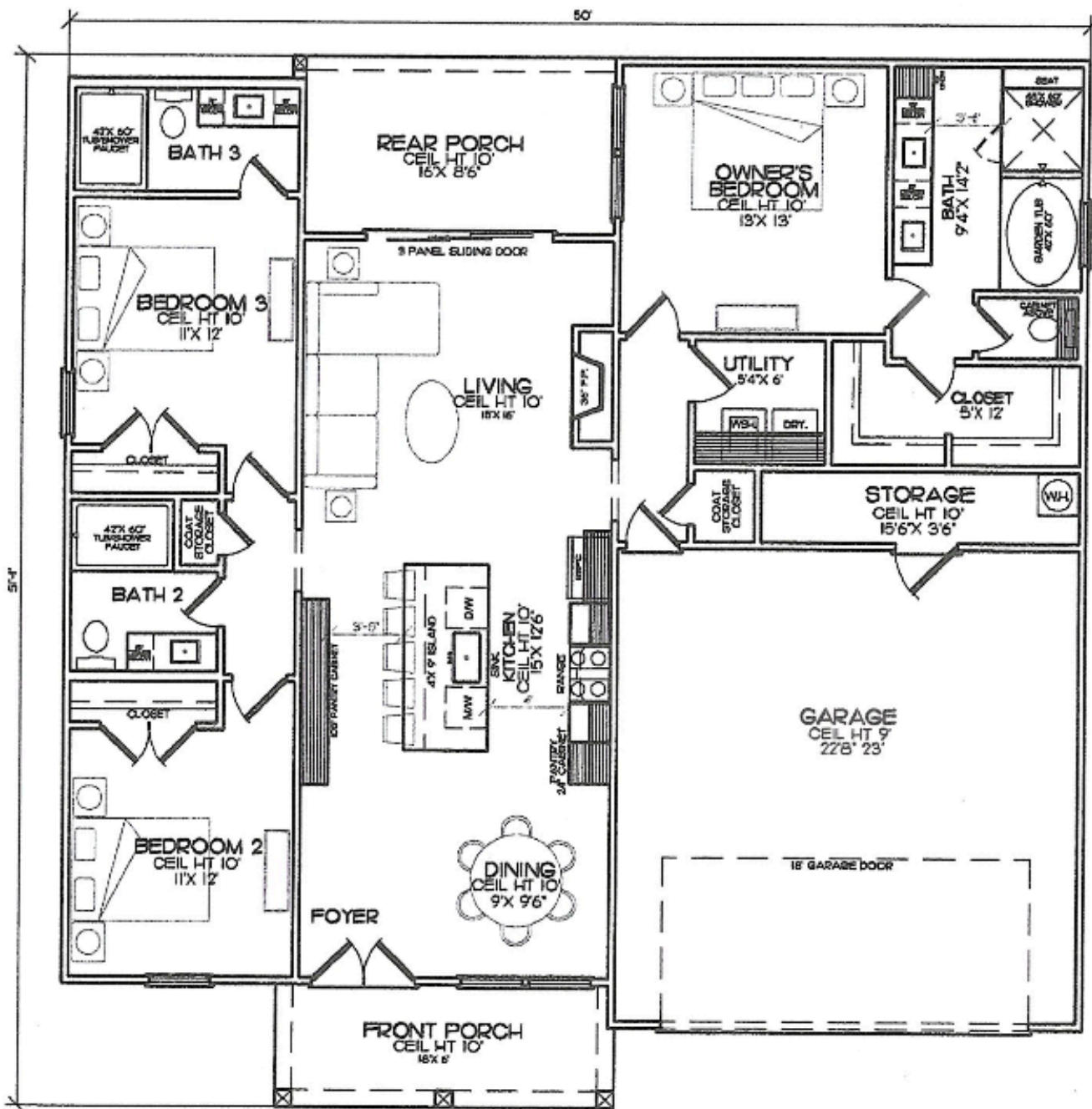


CAMDEN



MARK CLEARY
C. 713-303-8924
O. 662-371-1000
markccleary@gmail.com

ALL RENDERINGS, FLOOR PLANS, FEATURES AND PHOTOGRAPHY ARE ARTIST'S DEPICTIONS ONLY. FEATURES, PRICING AND DIMENSIONS SHOWN HEREIN ARE SUBJECT TO CHANGE WITHOUT NOTICE. ALL DIMENSIONS ARE APPROXIMATE. DEVELOPER RESERVES THE RIGHT TO MODIFY OR ADJUST SPECIFICATIONS WITHOUT NOTICE. ORAL AND E-MAIL REPRESENTATIONS CANNOT BE RELIED UPON AS ACCURATELY STATING THE REPRESENTATIONS OF THE DEVELOPER. FOR CORRECT REPRESENTATIONS, REFER TO THE DOCUMENTS FINISHED DIRECTLY BY THE DEVELOPER. WE ARE PLEDGED TO THE LETTER AND SPIRIT OF US POLICY FOR THE ACHIEVEMENT OF EQUAL HOUSING OPPORTUNITY THROUGHOUT THE NATION. WE ENCOURAGE AND SUPPORT AN AFFIRMATIVE ADVERTISING AND MARKETING PROGRAM IN WHICH THERE ARE NO BARRIERS TO OBTAINING HOUSING BECAUSE OF RACE, COLOR, RELIGION, SEX, SEXUAL ORIENTATION, HANDICAP, FAMILIAL STATUS, OR NATIONAL ORIGIN.



**LAMAR LAKES
OXFORD**

**1563 SQ FT +/-
4 BEDROOMS
4 BATHS
\$448,581**



**MARK CLEARY
C. 713-303-8924
O. 662-371-1000**

markccleary@gmail.com

ALL RENDERINGS, FLOOR PLANS, FEATURES AND PHOTOGRAPHY ARE ARTISTS' DEPICTIONS ONLY. FEATURES, PRICING AND DIMENSIONS SHOWN HEREIN ARE SUBJECT TO CHANGE WITHOUT NOTICE. ALL DIMENSIONS ARE APPROXIMATE. DEVELOPER RESERVES THE RIGHT TO MODIFY OR ADJUST REPRESENTATIONS WITHOUT NOTICE. ORAL AND E-MAIL REPRESENTATIONS CANNOT BE RELIED UPON AS ACCURATELY STATING THE REPRESENTATIONS OF THE DEVELOPER. FOR CORRECT REPRESENTATIONS, REFER TO THE DOCUMENTS FINISHED DIRECTLY BY THE DEVELOPER. WE ARE PLEDGED TO THE LETTER AND SPIRIT OF US POLICY FOR THE ACHIEVEMENT OF EQUAL HOUSING OPPORTUNITY THROUGHOUT THE NATION. WE ENCOURAGE AND SUPPORT AN AFFIRMATIVE ADVERTISING AND MARKETING PROGRAM IN WHICH THERE ARE NO BARRIERS TO OBTAINING HOUSING BECAUSE OF RACE, COLOR, RELIGION, SEX, SEXUAL ORIENTATION, HANDICAP, FAMILIAL STATUS, OR NATIONAL ORIGIN.